

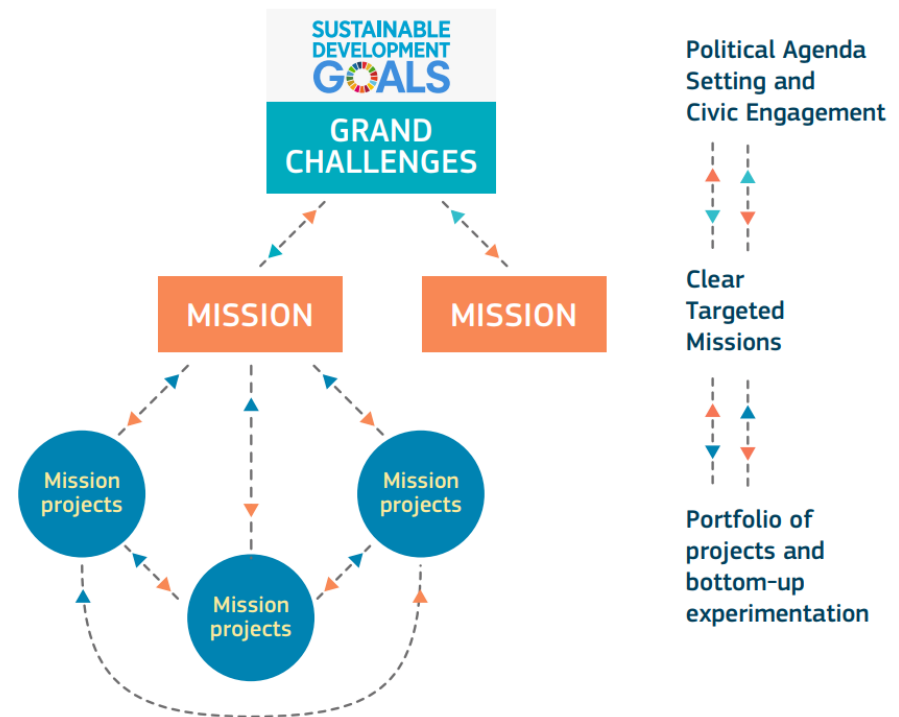
Supporting Challenge-led and Mission-Oriented Research

Dr Andrew Jackson

Director, Research & Innovation Services

Horizon Europe Missions

- Missions set **clear and actionable objectives** that can **only be achieved by a portfolio** of research and innovation projects and supportive measures.
- Roughly **5% of overall budget initially** – possibly growing to around 10-15%
- Mission boards will provide oversight
- Strong SSH input expected
- Emphasis on citizen science

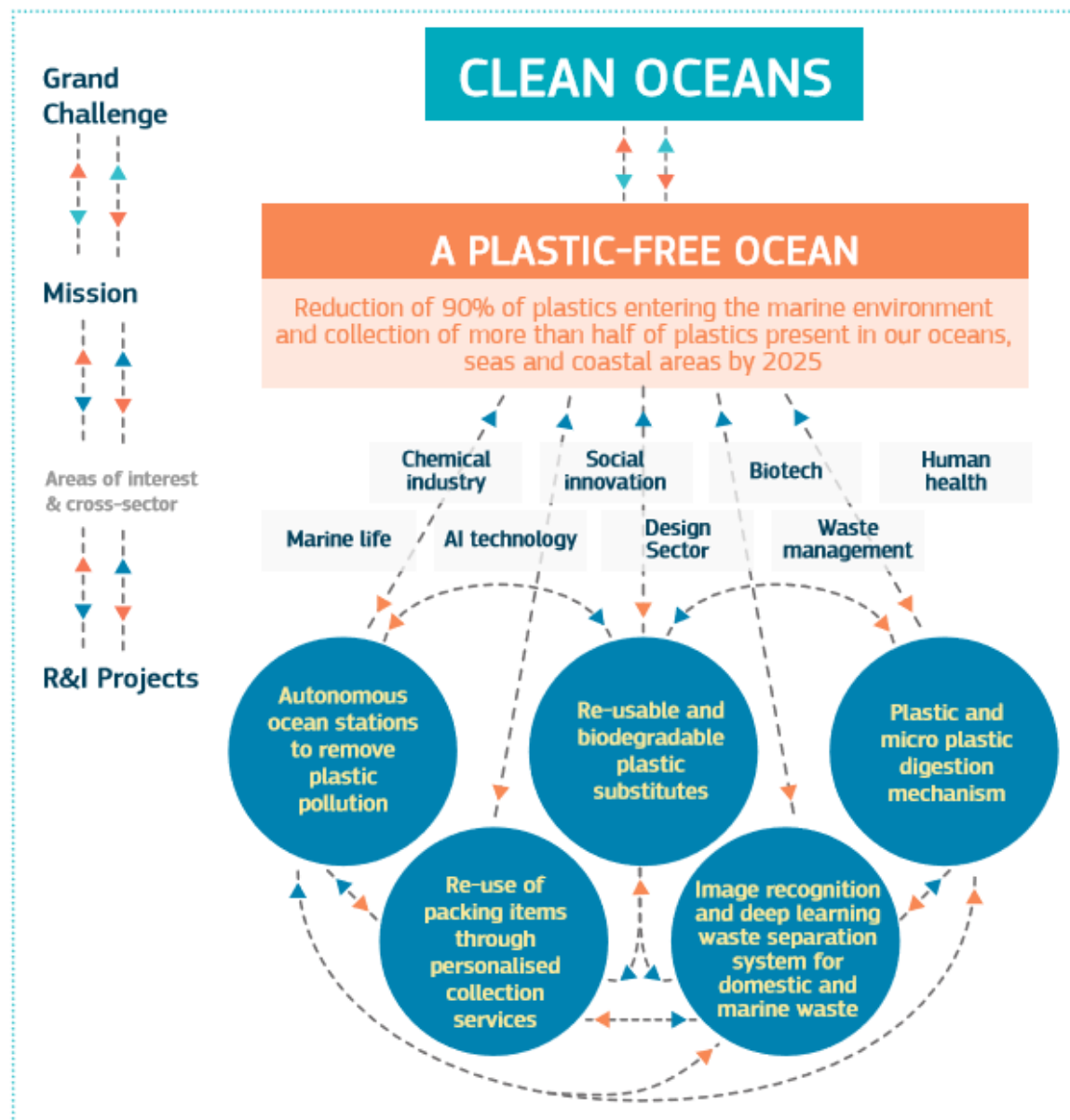




SUSTAINABLE DEVELOPMENT GOALS

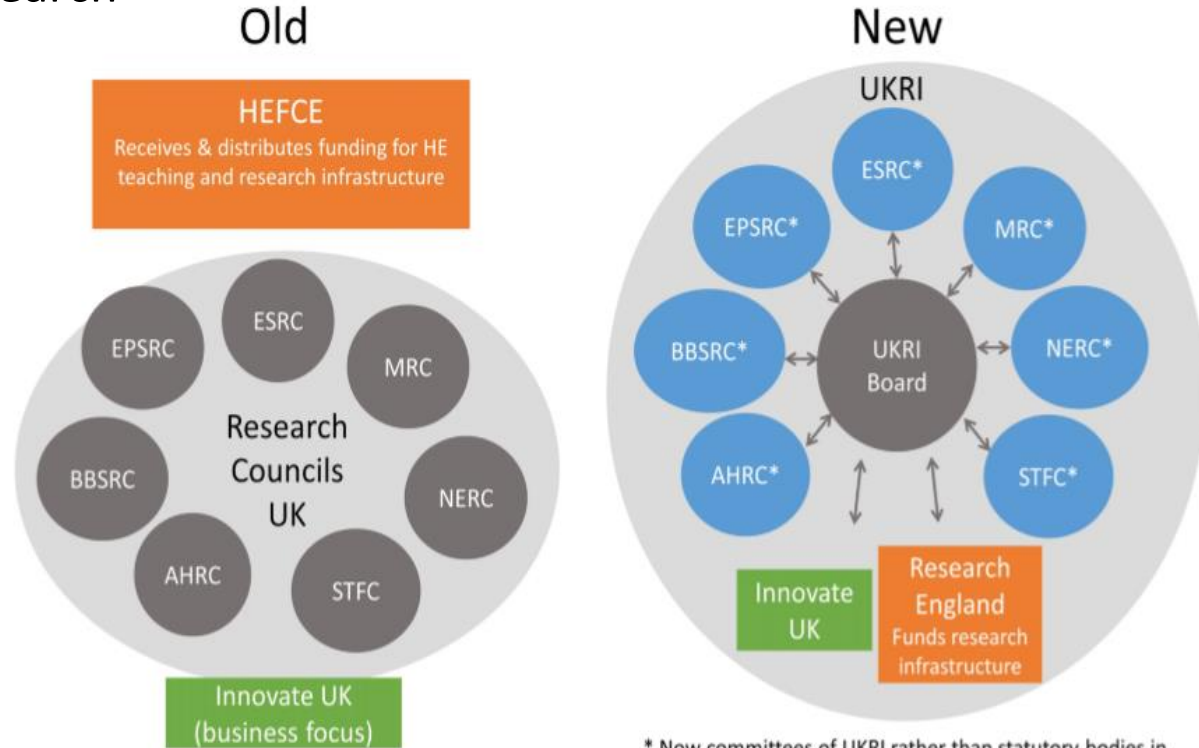


Developed in collaboration with **TROLLBÄCK + COMPANY** | TheGlobalGoals@trollback.com | +1.212.529.1010
For queries on usage, contact: dpicampaigns@un.org



Challenge-led research in the UK

- Huge increase in financial support for challenge-led research
- **National funding agency structure changing** to accommodate this mode of research



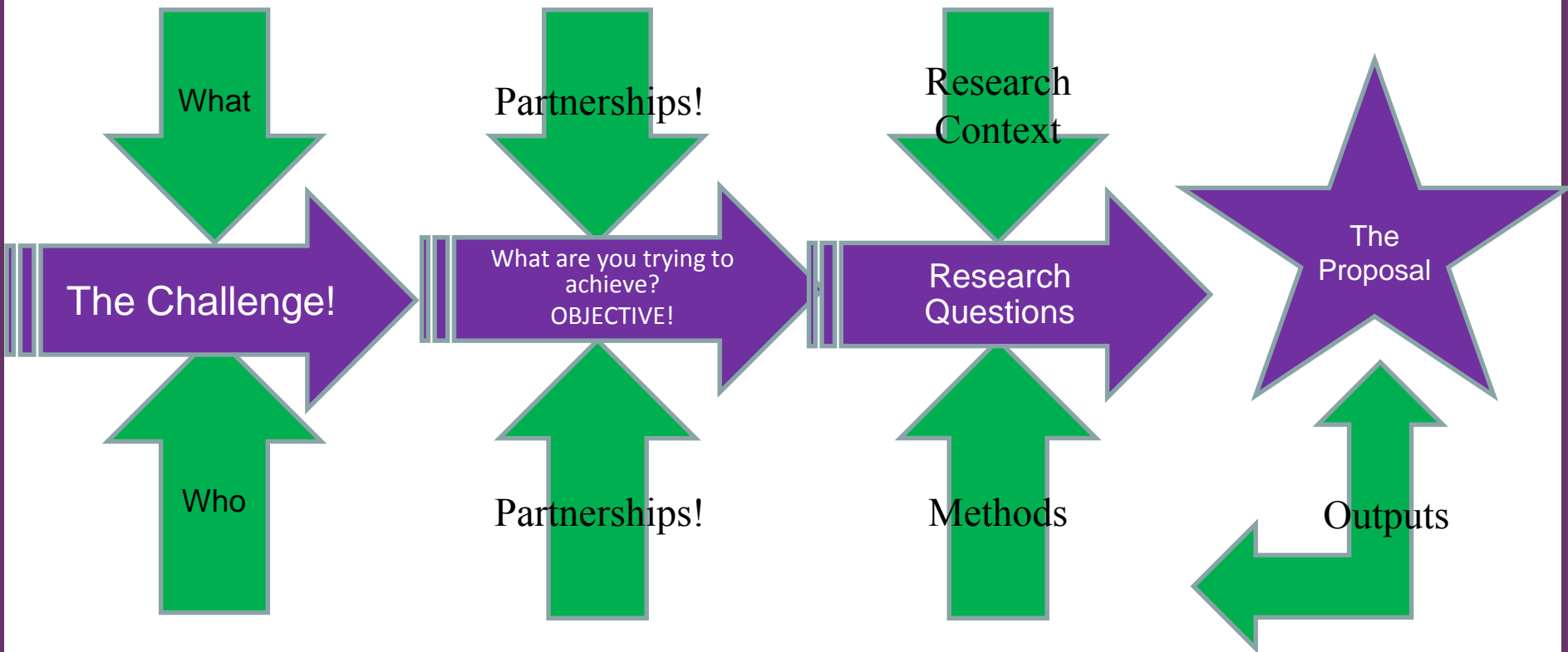


**INDUSTRIAL
STRATEGY**

UK-based challenge-led research

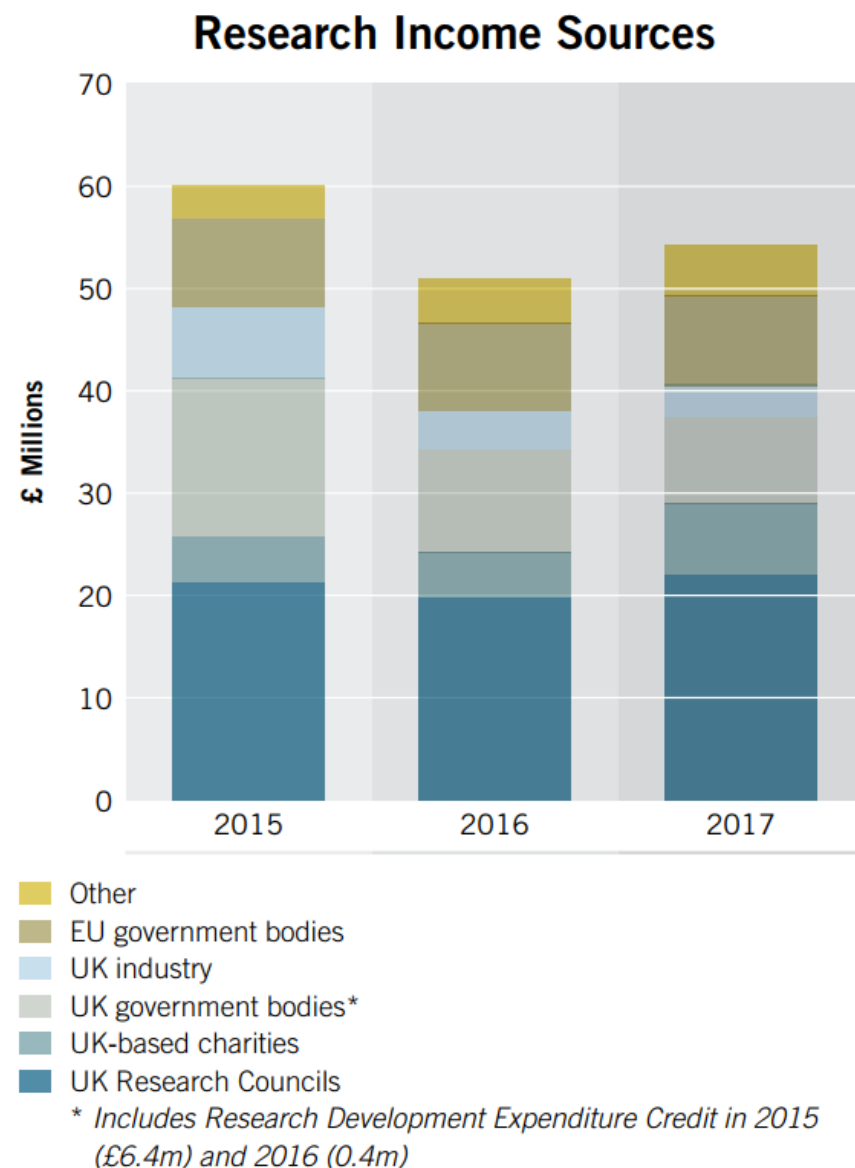
- Global Challenges Research Fund:
 - **Three ‘Challenge Areas’** (Equitable Access to Sustainable Development, Sustainable Economies & Societies, Human Rights, Good Governance & Social Justice)
 - Aligned with **UN SDGs**
 - Part of UK **ODA commitment** (evidence of impact in DAC-list nations)
 - **Co-design, co-creation** & stakeholder engagement are key
- Industrial Strategy Challenge Fund:
 - **Four ‘Grand Challenges’** (AI, Clean Growth, Mobility, Ageing Society)
 - Industrial Strategy **Challenge Funds**
 - **Strength-in-places** fund
 - Post-ESIF **development funds**

Challenge-led Research Lifecycle

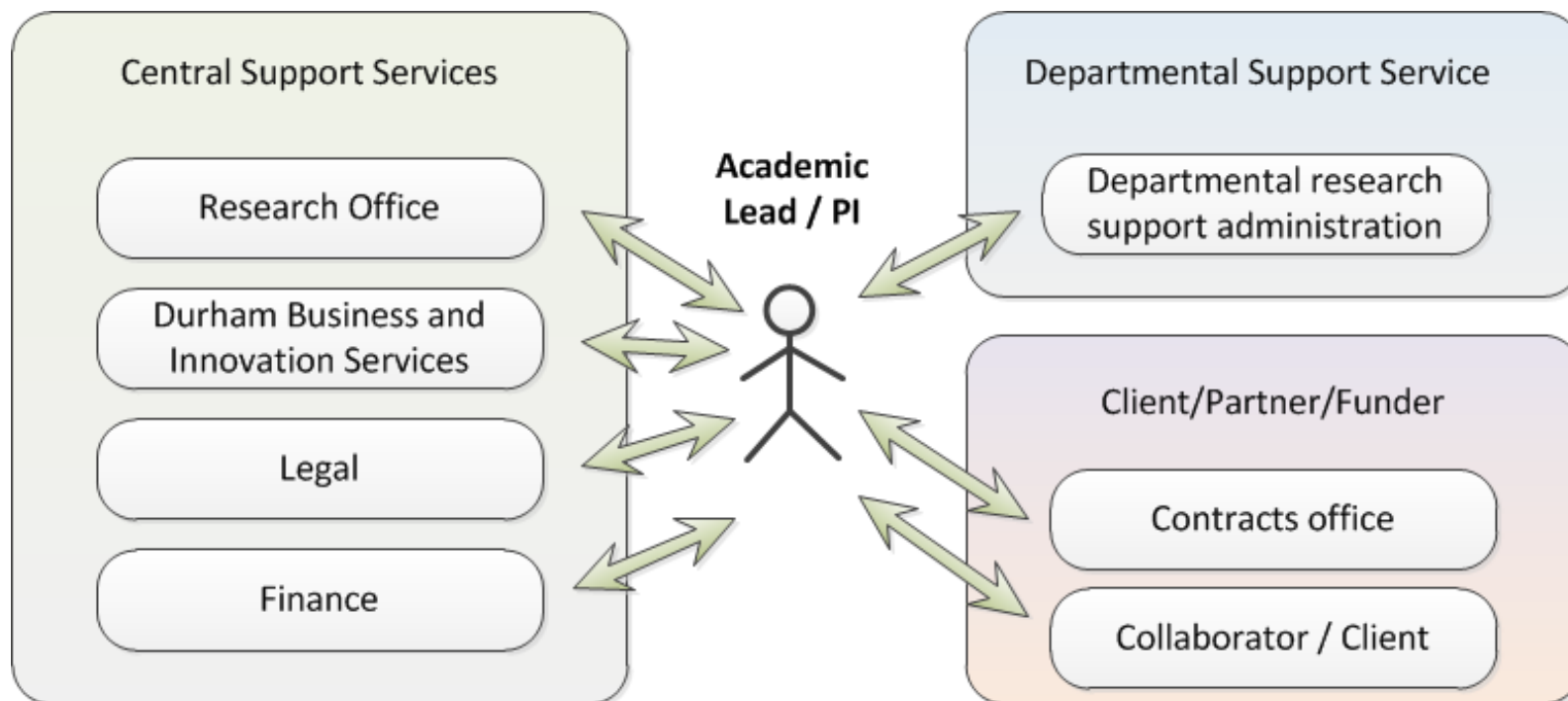


DU Research Activity and Income

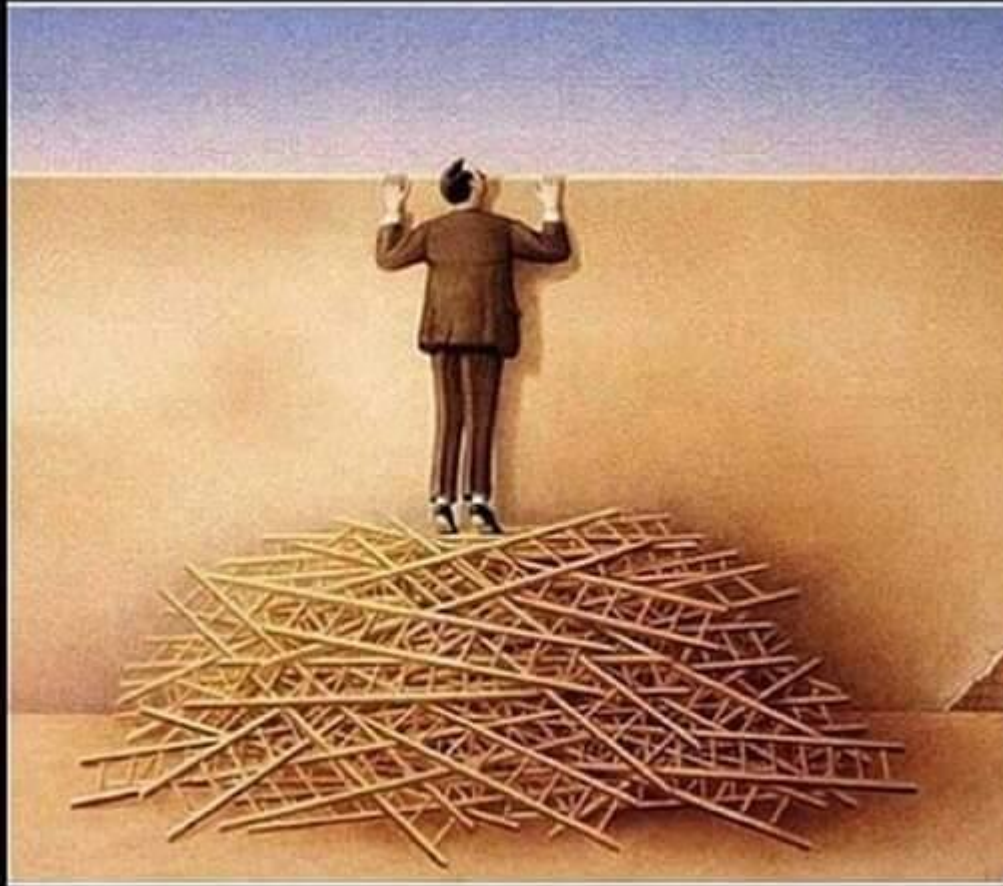
- Research grants and contracts income £53m in 2017 (up from £51m in 2016)
- League table performance:
 - QS World Ranking: 78, Times Higher World Ranking: 114
 - 21 of Durham's 26 departments were ranked in the top 10 in the 2017 Guardian League Tables - 11 ranked in the top 5



Research and Innovation Support

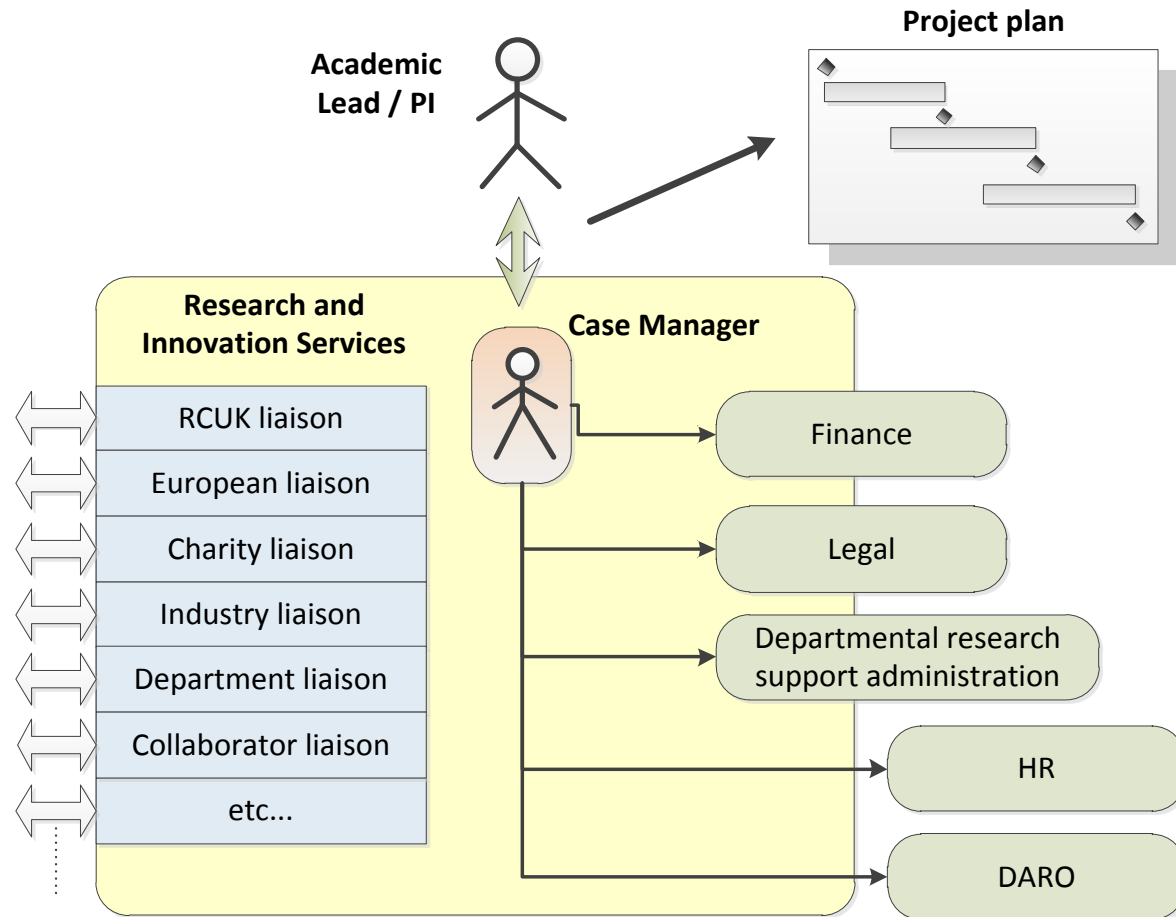


It doesn't matter how many resources you have.



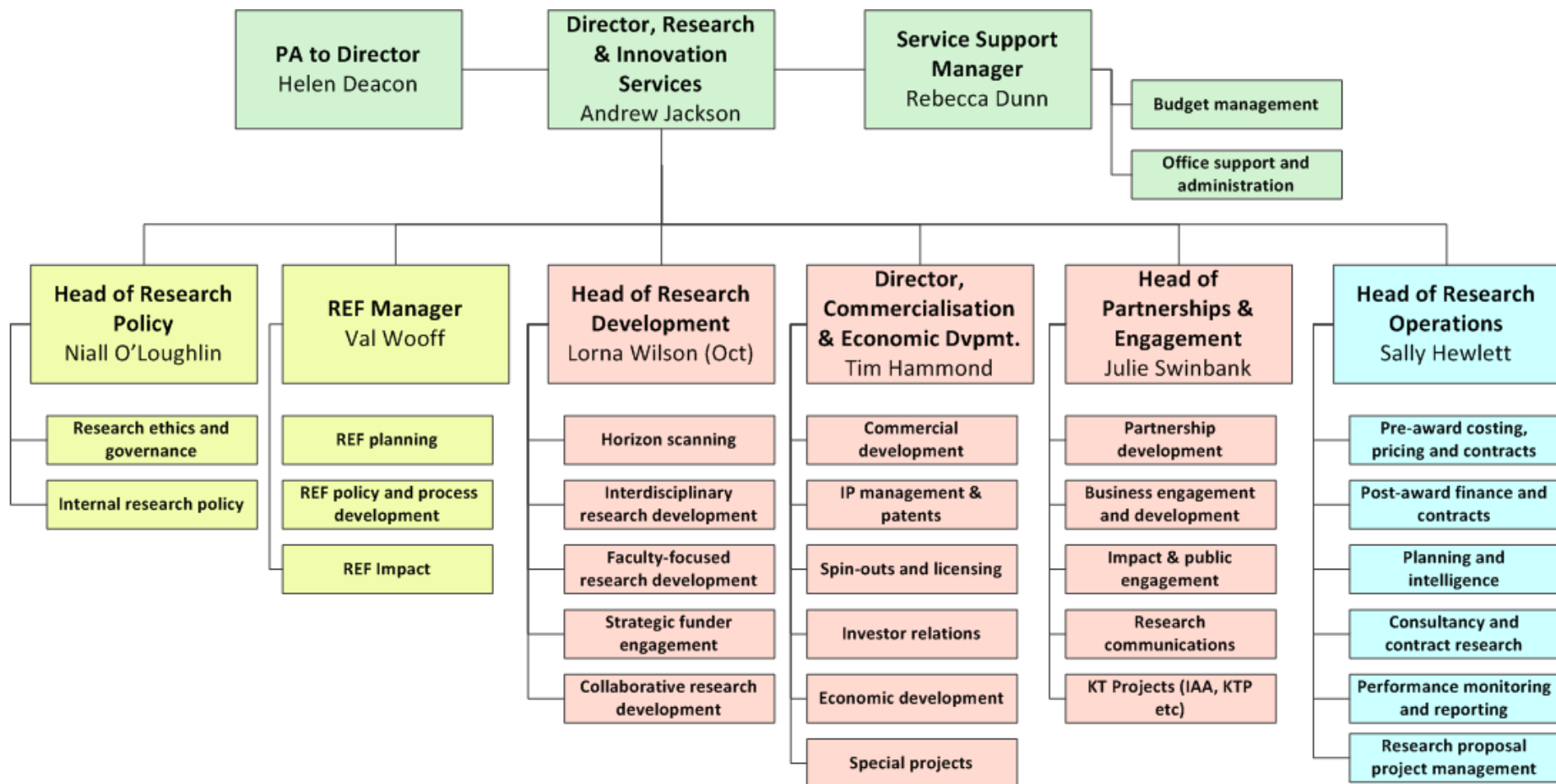
If you don't know how to use them,
it will never be enough.

Research and Innovation Support Operating Model



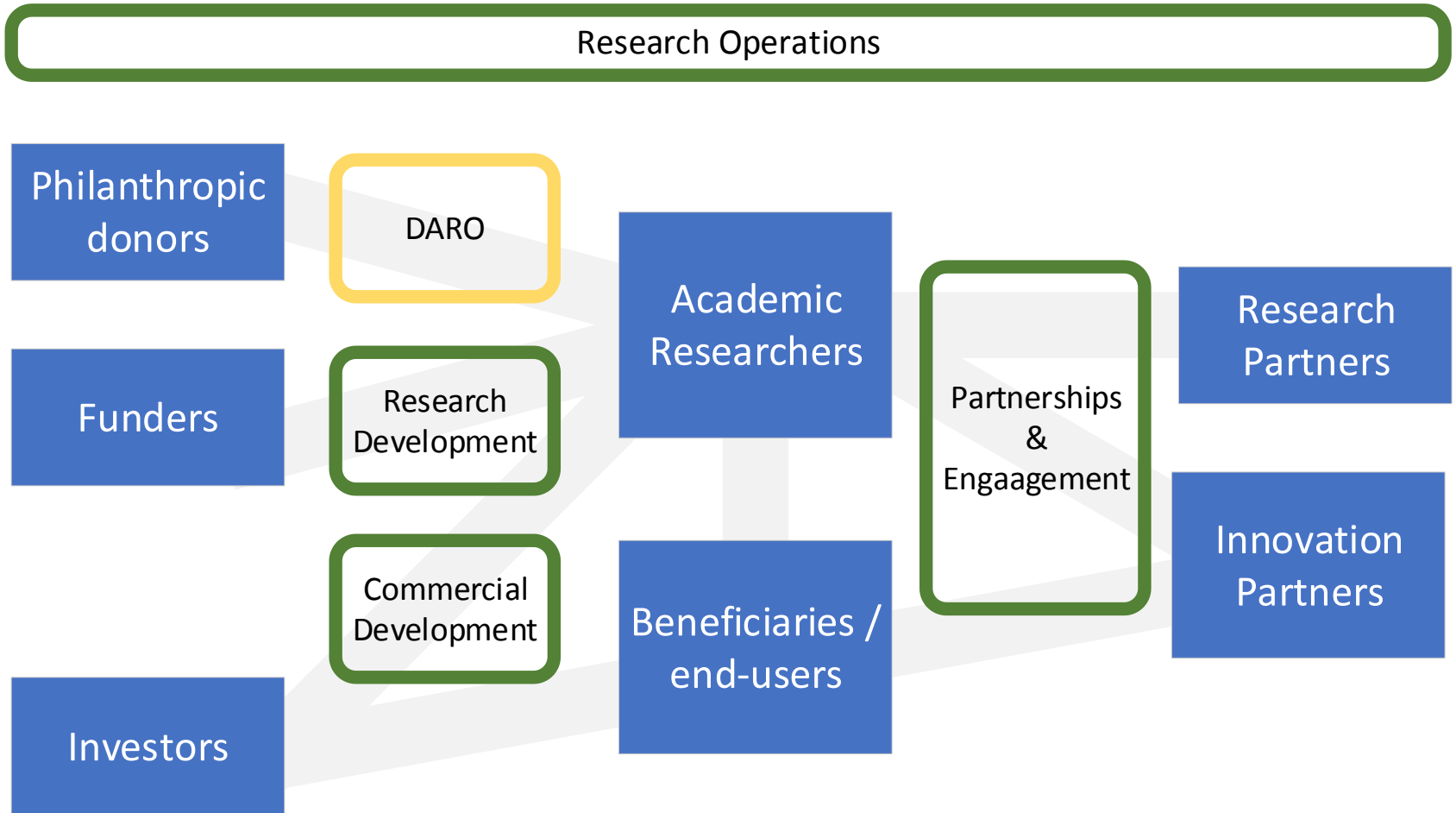
Research and Innovation Support

Structural Developments

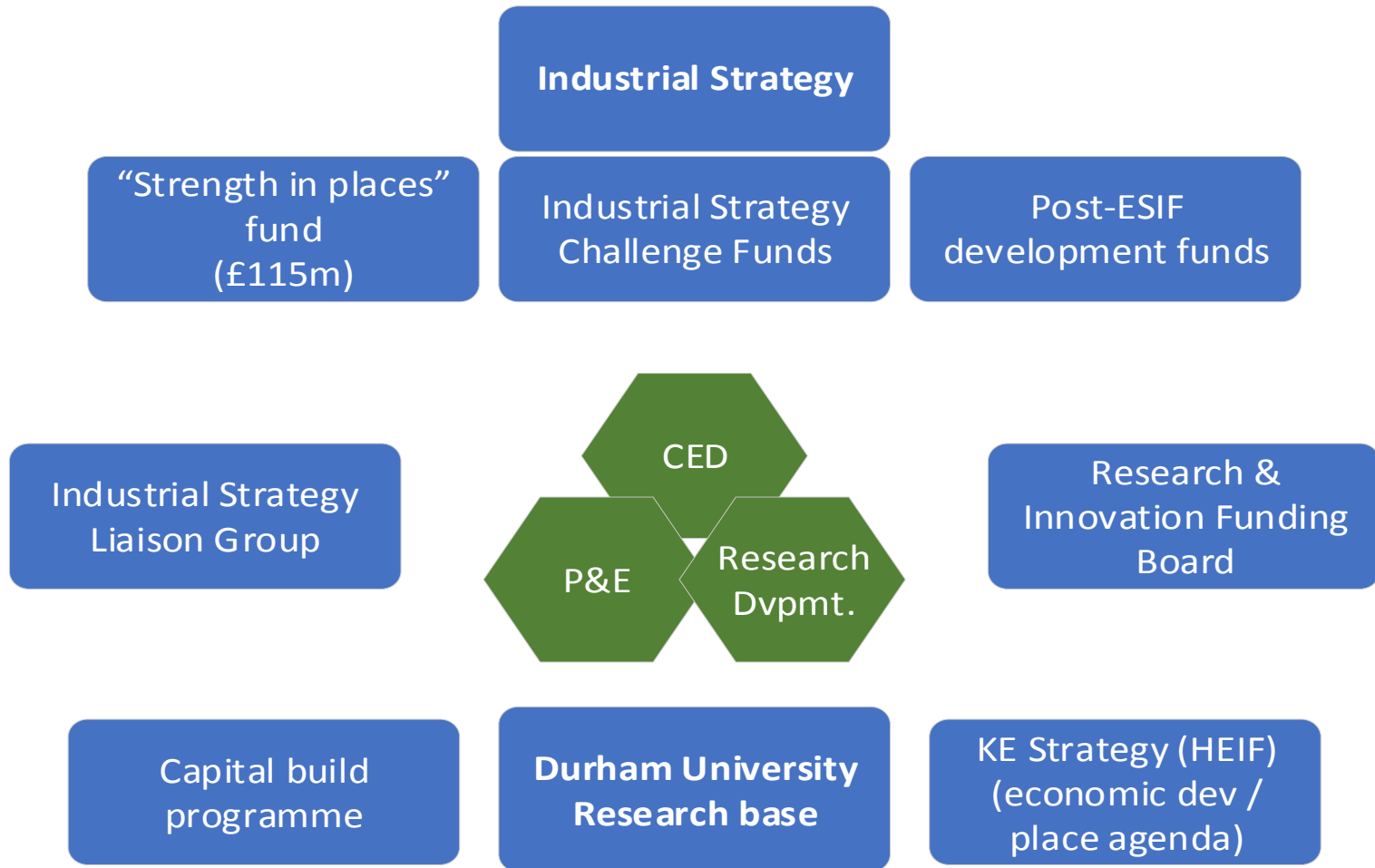


Supporting Challenge-Led Research

Support & Stakeholder Ecosystem



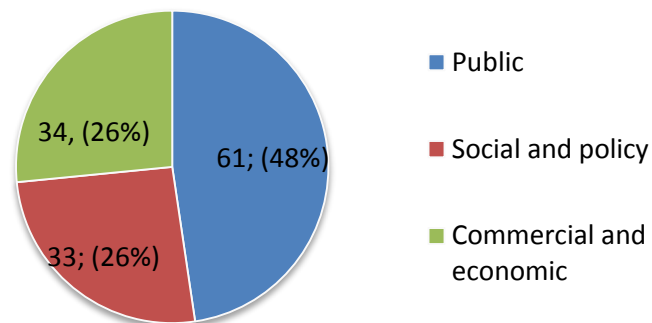
DU engagement with Industrial Strategy



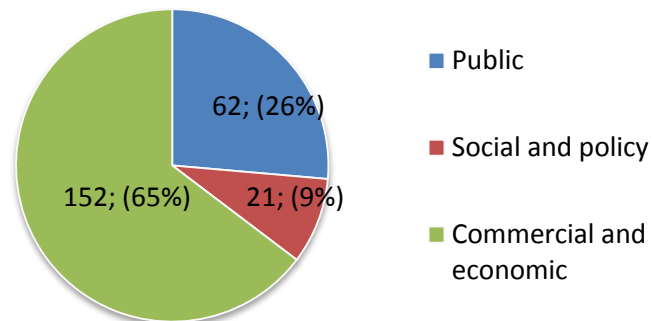
Supporting Impact

- Dedicated **central impact support team**:
 - 1 FTE – Cultural Heritage
 - 1 FTE – Commercial & Economic
 - 2 FTE – Policy

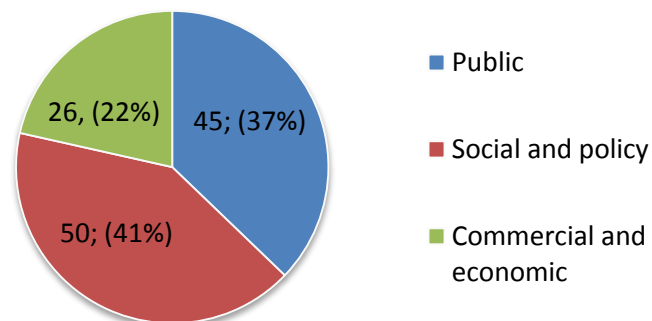
A&H



Science



Social Science

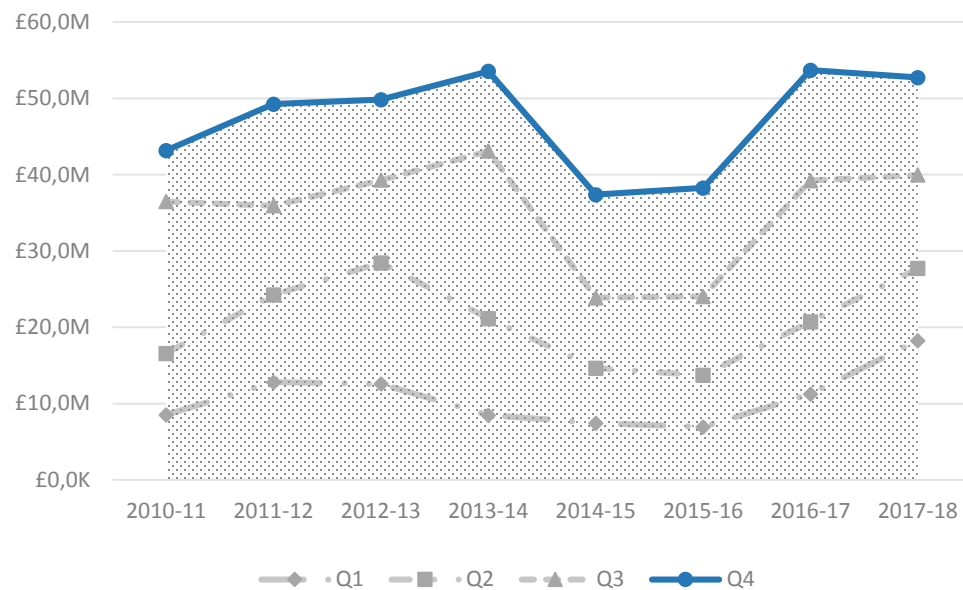


Key reviewer/panel feedback

- Horizon scanning key, for both research AND policy landscapes
- Some challenges are truly intractable, so demonstrating how teams will succeed where others have failed is crucial
- Need a cohesive and ambitious narrative that balances excellence and action
- Non-academic partnerships are EVERYTHING!



Performance Indicators



Awards > £1m

